

Tateyama Mountain Range



Scenic Viewpoints
in Toyama City

Top 20

The Tateyama Mountain Range reaches elevations of over 3,000 meters. Toyama City offers a number of stunning scenic spots from which to view this magnificent range, all easily accessible by public transportation or by car. Enjoy it from various perspectives, with the mountains set against the city, coastline, woodlands, and farmland.

Q&A on Viewing Tips

Q When can you see the range covered in snow?

A From mid-October to May.

Q When is the best time of year to see the range at its most beautiful?

A From December to March, when there is a good amount of snow.

*Please note that winter weather in Toyama can be quite unstable with many cloudy, rainy and snowy days. Although sunny weather is ideal for enjoying the mountain views, there are usually only one or two sunny days per week during winter. On those rare sunny days, the visibility improves significantly, increasing the chances of seeing the mountains clearly.

Q Which direction can you view the range in?

A To the southeast when viewed from Toyama City.

Q What time of day is best for viewing the range?

A From 12:00 p.m. to 5:00 p.m.

*In the morning, the mountains are backlit, but around noon they are frontlit, making them appear clearer and more distinct. The period just before sunrise, when the mountains stand out clearly in silhouette, and the time around 4:30 p.m. in winter, when the sky turns pink at sunset, are also highly recommended.

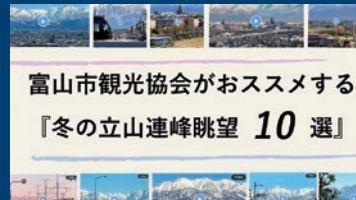
Q What are the prime conditions for enjoying the best views of the mountains?

A The prime conditions are perfectly or almost perfectly sunny days with few clouds and clear air. The best time of day is in the morning when temperatures tend to be lower due to radiative cooling.

*Please be sure to focus on driving and avoid being distracted by the stunning views of the Tateyama Mountain Range.

Virtual experience of the Tateyama Mountain Range on video!

The Toyama City Tourism Association has selected ten great viewing spots for the Tateyama Mountain Range in winter from its video posts on the official X account. Videos for spots accessible by public transportation or car are also available here.



Japanese-language site

Tateyama Viewing Forecast

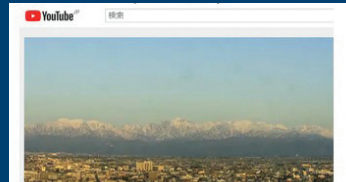
This webpage provides daily information on the visibility of the range from Toyama City, indicated in percentages. Please be sure to check it in advance, as conditions can change greatly depending on the day.

If it's 60% or above, you will have a fair chance of a good view!



Tateyama Live Video Camera

Live footage of the Tateyama Mountain Range, showing views to the east and south, is continuously streamed from a camera installed at Toyama City Hall Observation Tower, making it easy to check real-time views at any time.



Guide to Icons

O Number (corresponds to the map)

C Access by car

P Parking

PT Access by public transportation

OH Opening hours

🚗 Tateyama Mountain Range viewing spot accessible by car

*Bus information may be subject to change depending on the season.

*Time required to reach each viewing point may vary depending on traffic conditions.



1 Toyama City Hall Observation Tower

This observatory is situated approximately 70 meters above ground level, offering a stunning 360-degree panoramic view of Toyama City and the majestic Tateyama Mountain Range. Video monitors inside the observatory also showcase panoramic views. (Free admission)

DATA **🚗** Available **🕒** 9:00 a.m. to 9:00 p.m. (Apr. to Oct.) 9:00 a.m. to 6:00 p.m. (Nov. to Mar.) From 10:00 a.m. on weekends and National Holidays **🚗** 15 min from Toyama IC on the Hokuriku Expressway **🚶** 10 min walk from Toyama Station



3 Fugan Canal Kansui Park (Tenmon-kyo Bridge)

This urban park near Toyama Station is a peaceful retreat, surrounded by water and greenery along the Fugan Canal. From the observation towers at both ends of Tenmon-kyo Bridge spanning the canal, visitors can enjoy magnificent seasonal views of the Tateyama Mountain Range. (Free admission)

DATA **🚗** Available **🕒** Open 24 hours **🚗** 25 min from Toyama IC on the Hokuriku Expressway **🚶** 10 min walk from the north exit of JR Toyama Station



2 Nishicho Intersection (by TOYAMA KIRARI)

From this lively area of the city with the Toyama Glass Art Museum and a popular department store, visitors can enjoy the iconic urban landscape of Toyama. It is also possible to observe a moving tram with the Tateyama Mountain Range as a backdrop.

DATA **🚗** Not available **🚶** 13 min from Toyama IC on the Hokuriku Expressway **🚶** 10 min by tram from Toyama Station to Nishicho tram stop, and then a 1 min walk



4 Toyama Ohashi Bridge (Toyama Ohashi Pocket Park)

From the observation decks placed at both ends of the bridge, visitors can enjoy the panoramic view of trams running through the city, soaring buildings in the city center, and the majestic Tateyama Mountain Range.

DATA **🚗** Not available **🚶** 15 min from Toyama IC on the Hokuriku Expressway **🚶** 10 min by tram from Toyama Station to the Toyota Mobility Toyama G Square Gofuku-mae tram stop, and then a 4 min walk

▲ Tateyama Mountain Range viewed from the Mt. Kureha Park Observatory

Mt. Kekachi 2,415 m

Mt. Kamatan 2,415 m

Mt. Nekomata 2,378 m

Mt. Oneko 2,055 m

Mt. Akatan 2,260 m

Omado

Komado

Sannomado

Hakatsukione Ridge

Mt. Tsurugidake 2,999 m

Maesuruji 2,813 m

Tsurugiozen 2,777 m

Mt. Bessan 2,880 m

Mt. Okudainichidake 2,611 m

Mt. Dainichidake 2,501 m

Fujinooritate 2,999 m

Mt. Ohanji 3,015 m

Mt. Oyama 3,003 m

Murodo 2,450 m

Mt. Jodosan 2,831 m

Mt. Ryuodake 2,872 m

Mt. Onidake 2,750 m

Mt. Shishidake 2,714 m

Midogahara

Zaria Pass

Mt. Washidake 2,617 m

Mt. Tonbi 2,616 m

Mt. Echuzawadake 2,591 m

Mt. Kuwasaki 2,090 m

Mt. Yakushidake 2,926 m



5 Heiwa Street (by Gokoku Shrine)

From this street lined with ginkgo trees, visitors can enjoy a stunning view of the golden leaves with Mt. Tsurugidake, lightly dusted with early snow in the background. The best time to enjoy this view is at the peak of the autumn leaves season from early to mid-November.

DATA ❶ Not available ❷ 15 min from Toyama IC on the Hokuriku Expressway ❸ 7 min by tram from Toyama Station to Yasunoya tram stop, and then a 4 min walk



6 Toyama Kitokito Airport (Observation Deck)

The observation deck on the fourth floor of the domestic terminal offers dynamic views of the Tateyama Mountain Range, as well as aircraft taking off and landing on Japan's only riverside runway. (Free admission)

DATA ❶ Available ❷ 6:30 a.m. to 9:00 p.m. ❸ 8 min from Toyama IC on the Hokuriku Expressway ❹ 24 min by bus from Toyama Station to Toyama Airport bus stop, and then a 1 min walk



9 Iwasehama Beach

Visitors can enjoy a spectacular view of the Tateyama Mountain Range rising beyond Toyama Bay from this beach, where enjoyment of both the ocean and the mountains can be experienced at the same time.

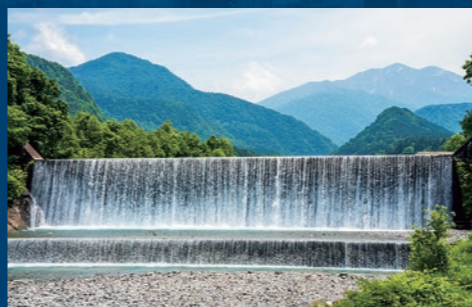
DATA ❶ Available ❷ 35 min from Toyama IC on the Hokuriku Expressway ❸ 25 min by train on the Toyamako Line from Toyama Station to Iwasehama Station, and then a 7 min walk



10 Iwase Canal Hall (Iwase Bridge)

From this hall, visitors can enjoy scenic views of the Fugan Suijo Line boats cruising along the calm waters of the canal and the tram linking Toyama Station with the port town of Iwase, all set against the majestic Tateyama Mountain Range.

DATA ❶ Available ❷ 9:30 a.m. to 5:00 p.m. ❸ 35 min from Toyama IC on the Hokuriku Expressway ❹ 25 min by train on the Toyamako Line from Toyama Station to Iwasehama Station, and then a 3 min walk



13 Yoshimibashi Bridge (Omi)

It is possible to enjoy a stunning view of the dynamic flow of water cascading down the 22-meter-high Hongu Sabo Dam from this arched bridge over the Joganji River, with the Tateyama Mountain Range as a backdrop.

DATA ❶ Not available ❷ 30 min from Toyama IC on the Hokuriku Expressway ❸ 52 min by train on the Toyama Chihou Railway Main Line from Dentetsu-Toyama Station to Chigaki Station, and then a 6 min walk



14 Ushidake Ski-Board & Spa Resort (Ushidake Panorama Observation Deck)

From this observation deck, it is possible to witness Toyama's unique dynamic topography in a 360-degree panorama, stretching from Toyama Bay, which reaches depths of 1,000 meters, to the Tateyama Mountain Range, rising to elevations of over 3,000 meters.

DATA ❶ Available ❷ Open 24 hours ❸ 30 min from Toyama-nishi IC on the Hokuriku Expressway



17 Toyama Prefectural Route 3: Toyama-Tateyama-Uozu Line (Toyama-shi Taromaru - Dainichibashi Bridge)

This scenic driving route offers picture-perfect views of the snow-covered peaks of the Tateyama Mountain Range. This breathtaking view can be enjoyed over a long drive from Toyama City to Tateyama Town.

DATA ❶ 10 min from Toyama IC on the Hokuriku Expressway



18 Toyama Prefectural Route 6: Toyama-Tateyama Koen Line (Ishigane - Furuhashi Bridge)

The road connecting Toyama City and Tateyama Town offers a beautiful blend of the townscape and the view of the snow-covered peaks of the Tateyama Mountain Range, which gently overlook people's daily lives.

DATA ❶ 15 min from Toyama IC on the Hokuriku Expressway



7 Mt. Kureha Park Observatory

This observatory, positioned at a height of 76.8 meters is located near the summit of Mt. Kureha, offering magnificent panoramas of not only the Tateyama Mountain Range, but also the city center, Hokuriku Shinkansen, Toyama Bay and the Noto Peninsula.

DATA ❶ Available ❷ Open 24 hours ❸ 20 min from Toyama IC on the Hokuriku Expressway ❹ 9 min by bus from Toyama Station to Minzoku Mingeimura (Toyama Municipal Folkcraft Village) bus stop, and then a 20 min walk



8 Kureha Hills Footpath Bridge

This pedestrian-only suspension bridge has a span of 124 meters and connects Mt. Kureha Park and Shiroyama Park. From the bridge, visitors can enjoy views of both the Tateyama Mountain Range and Toyama City.

DATA ❶ Available ❷ 9:00 a.m. to 9:00 p.m. (Closed from Dec. to Mar.) ❸ 20 min from Toyama IC on the Hokuriku Expressway ❹ 15 min by bus from Toyama Station to Kurehayama Koen bus stop, and then an 11 min walk



11 Mizuhashi Fisharena

This marina serves not only as a dock for recreational boats but also as a base for some marine activities. It also offers picturesque views of the Tateyama Mountain Range rising beyond Toyama Bay, as well as the Noto Peninsula.

DATA ❶ Available ❷ 35 min from Toyama IC on the Hokuriku Expressway ❸ 11 min by train on the Ainokaze Toyama Railway Line from Toyama Station to Mizuhashi Station, and then a 27 min walk



12 Jinzugawa Greenery (Kamikutsuwada, Fuchu-machi)

Visitors can take in dynamic views of the Tateyama Mountain Range from this area, as well as witness aircraft taking off and landing on the 2,000-meter-long runway alongside the Jinzu River.

DATA ❶ Available ❷ 15 min from Toyama IC on the Hokuriku Expressway ❸ 28 min by bus from Toyama Station to Chuo Shokubutsuen-guchi (Botanic Gardens of Toyama) bus stop, and then a 20 min walk



15 Tachihongo, Yatsuo-machi

Flocks of swans can be seen wintering on the rice paddies here with the Tateyama Mountain Range as a backdrop. Another highlight is the sight of the mountains reflected upside down on the water's surface.

DATA ❶ Not available ❷ 35 min from Toyama IC on the Hokuriku Expressway ❸ 20 min by train on the JR Takayama Main Line from Toyama Station to Chisato Station, 5 min by bus from Chisato Station to Yasuuchi Shogakko-mae bus stop, and then a 13 min walk



16 National Route 8: Toyama-Takaoka Bypass (Toyama-shi Toyota-machi Intersection - Kinsenji - Yuho Ohashi Bridge)

This scenic driving route offers a sight of the breathtaking landscape of a range of mountains rising to around 3,000 meters. The sheer scale of the view is so overwhelming that it can make everyday worries feel small and distant.

DATA ❶ 25 min from Toyama IC on the Hokuriku Expressway



19 Toyama Prefectural Route 55: Toyama Airport Line (Toyama Airport - Toyama-shi Ninagawa)

Just after leaving the airport, a dynamic view of the Tateyama Mountain Range will appear directly in front of you. This iconic scenery of Toyama provides both a welcome to the visitor and a welcome back to those returning home.

DATA ❶ 8 min from Toyama IC on the Hokuriku Expressway



20 Toyama Prefectural Route 35: Tateyama-Yamada Line (Naruko Ohashi Bridge - Toyama-shi Oguro)

This scenic driving route offers a picturesque view of where the vast sky and open farmland blend beautifully with the Tateyama Mountain Range. Drivers can experience a sense of harmony with the surrounding nature.

DATA ❶ 15 min from Toyama IC on the Hokuriku Expressway

MAP Toyama Bay

Access the more detailed map from here.



For inquiries on sightseeing, please contact

Toyama City Tourist Information Center ☎076-439-0800

Opening hours: 9:00 a.m. to 5:30 p.m. (9:00 a.m. to 5:00 p.m. from Dec. 1 to Mar. 15)

Closed days: Year-end and New Year holidays 1-45 Honmaru, Toyama City, 930-0081



Kanko Toyama Net Search



Issued in February 2026

by Toyama City Tourism Association

★ Other digital brochures are available from the "Brochure Gallery" on the English page of the website.